








COMET

2U Mono-Glass Module

645W-670W

Technical Features:

-  Partial Shading Optimisation
-  Better Temperature Coefficient
-  High Temperature Restriction
-  Micro-crack Resistance
-  Higher Power
-  Lower BOS
-  More Aesthetic Values



reddot winner 2023



Product Warranty
(Extendable to 25years*)



Performance
Warranty



670W

Output

24.8%

Efficiency

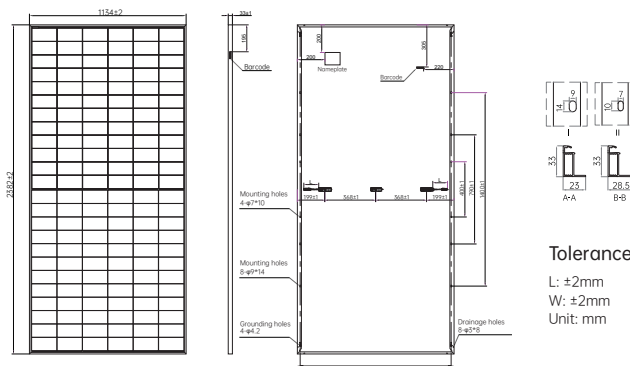
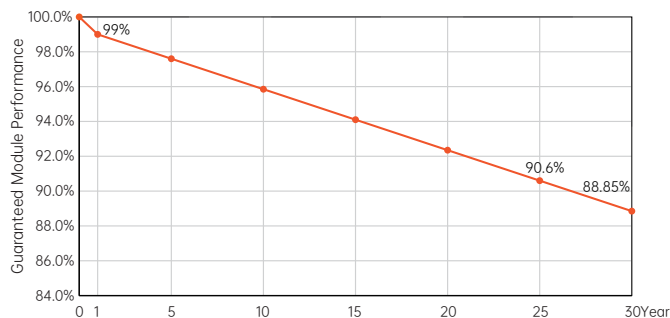
≤1%

First-year Degradation

≤0.35%

Annual Degradation from Year 2-30

30-year Linear Performance Warranty



Electrical Characteristics (STC: AM1.5 1000W/m² 25°C NOCT: AM1.5 800W/m² 20°C 1m/s) Power Tolerance: 0~ + 3%

Module Type	AIKO-G645-MCH72Mw		AIKO-G650-MCH72Mw		AIKO-G655-MCH72Mw		AIKO-G660-MCH72Mw		AIKO-G665-MCH72Mw		AIKO-G670-MCH72Mw	
	STC	NOCT	STC	NOCT	STC	NOCT	STC	NOCT	STC	NOCT	STC	NOCT
P _{max} [W]	645	486	650	490	655	493	660	497	665	501	670	505
V _{oc} [V]	54.30	51.28	54.40	51.37	54.50	51.47	54.60	51.56	54.70	51.66	54.80	51.75
V _{mp} [V]	45.00	42.50	45.10	42.59	45.20	42.69	45.30	42.78	45.40	42.87	45.50	42.97
I _{sc} [A]	15.06	12.18	15.12	12.23	15.18	12.28	15.24	12.32	15.30	12.37	15.36	12.42
I _{mp} [A]	14.34	11.44	14.42	11.51	14.50	11.57	14.57	11.63	14.65	11.69	14.73	11.76
Module Efficiency	23.9%		24.0%		24.2%		24.4%		24.6%		24.8%	

Mechanical Specification

Cell Type	N-Type ABC
Glass	3.2 mm tempered glass
Frame	Anodized aluminum
Cable	4mm ² (IEC) 12AWG(UL) +350mm, -280mm/±1400mm or Customized Length
No. of Cells	144(6*24)
Junction Box	IP68, 3 bypass diodes
Connector	MC4 Compatible/MC4-Evo2
Weight	28.2kg±3%
Dimension	2382*1134*33mm
Package Detail	33pcs per pallet / 132pcs per 20'GP / 660pcs per 40'HC

Temperature Ratings (STC)

Temperature Coefficient of I _{sc}	+ 0.05%/ °C
Temperature Coefficient of V _{oc}	- 0.22%/ °C
Temperature Coefficient of P _{max}	- 0.26%/ °C

Installation Guide

Operation Temperature	-40°C - +85°C
Maximum Series Fuse Rating	30A
Protection Class	Class II
V _{oc} and I _{sc} Tolerance	±3%
Maximum System Voltage	DC1500V
Maximum Static Loading	Front 5400Pa Back 2400Pa
Hail Test	35 mm diameter hail at 27.2 m/s
Fire Rating	IEC Class C

